



**PRIME MEATPACKING RETAIL AVAILABLE**

# 821 Washington Street

between Gansevoort Street and Little West 12th Street

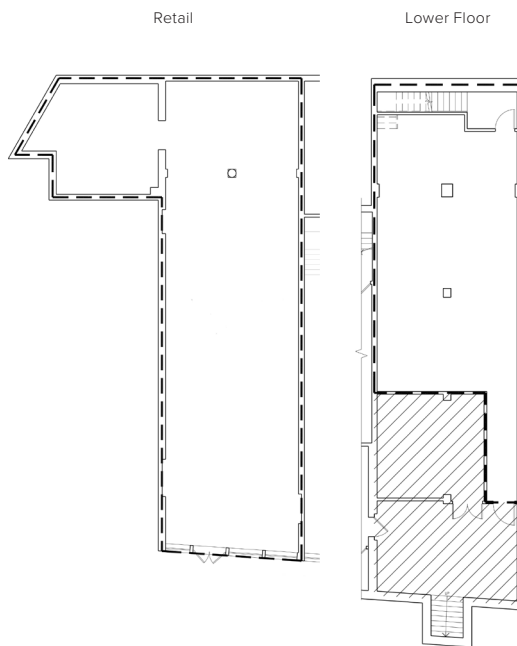
**PREMISES**

Ground Floor	2,384 sq ft
Lower Level	1,175 sq ft
Frontage	25 ft
Ceiling Height	11 ft 6 in
Availability	Immediate

**FEATURES**

- High traffic location
- Across from the High Line main entrance and Whitney Museum
- Move-in ready
- ADA-compliant restroom
- Column free
- Direct access to lower level

**FLOORPLANS**



**LOCATION**



**NEIGHBORS**

- Apple
- Brunello Cucinelli
- Christian Louboutin
- Diane Von Furstenburg
- Gansevoort Hotel
- Google
- Hermes
- Intermix
- La Pecora Bianca
- Match.com
- Pastis
- Restoration Hardware & Hotel
- Rolex Boutique
- Samsung
- Soho House
- The Standard Hotel
- Tesla
- Theory
- Vince
- Warby Parker
- Whitney Museum
- Zadig & Voltaire

833 Washington Street, 2nd Floor  
 New York, NY 10014  
 212-924-2973  
 info@romanoffequities.com  
 romanoffequities.com

**Darryl Romanoff**  
 212-323-7740  
 darryl@romanoffequities.com

**Stuart Romanoff**  
 212-323-7750  
 stuart@romanoffequities.com