



PRIME MEATPACKING RETAIL AVAILABLE

819 Washington Street

between Gansevoort Street and Little West 12th Street

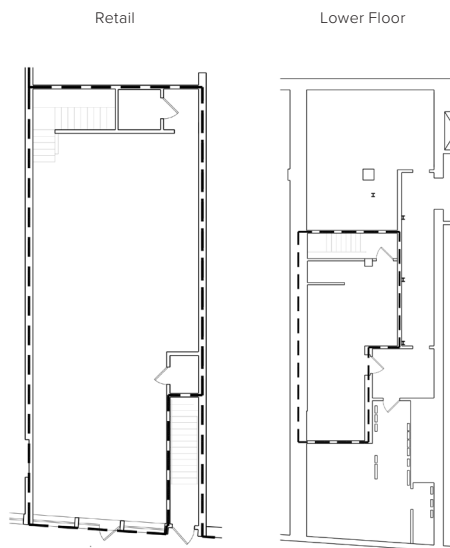
PREMISES

Ground Floor	1,323 sq ft
Lower Level	601 sq ft
Frontage	18 ft
Ceiling Height	12 ft 6 in
Availability	Immediate

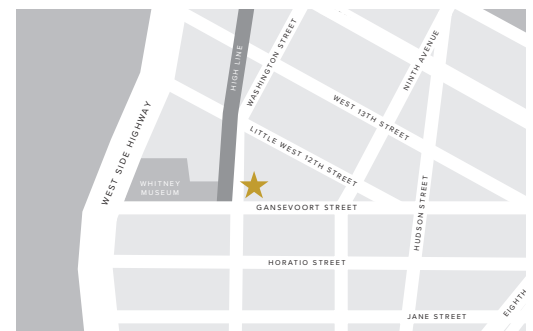
FEATURES

- High traffic location
- Across from the High Line main entrance and Whitney Museum
- Move-in ready
- Column free
- Finished lower level
- Separate meters

FLOORPLANS



LOCATION



NEIGHBORS

- Apple
- Brunello Cucinelli
- Christian Louboutin
- Diane Von Furstenberg
- Gansevoort Hotel
- Google
- Hermes
- Intermix
- La Pecora Bianca
- Match.com
- Pastis
- Restoration Hardware & Hotel
- Rolex Boutique
- Samsung
- Soho House
- The Standard Hotel
- Tesla
- Theory
- Vince
- Whitney Museum
- Zadig & Voltaire

833 Washington Street, 2nd Floor
 New York, NY 10014
 212-924-2973
 info@romanoffequities.com
 romanoffequities.com

Darryl Romanoff
 212-323-7740
 darryl@romanoffequities.com

Stuart Romanoff
 212-323-7750
 stuart@romanoffequities.com