



**PRIME CORNER MEATPACKING RETAIL AVAILABLE**

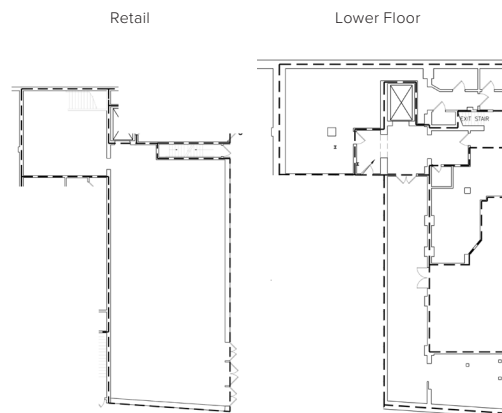
# 817 Washington Street

between Gansevoort Street and Little West 12th Street

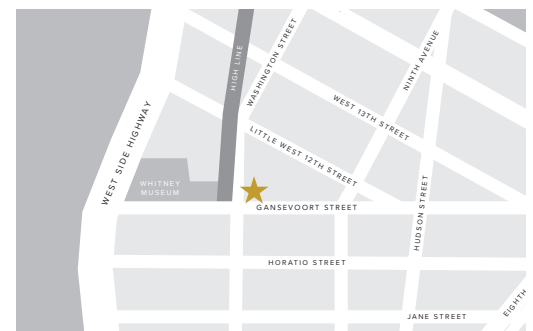
**PREMISES**

Ground Floor	2,800 sq ft
Lower Level	2,285 sq ft
Frontage	
Washington St.	35 ft
Gansevoort St.	69 ft
Ceiling Height	13 ft
Availability	Immediate

**FLOORPLANS**



**LOCATION**



**FEATURES**

- Previous liquor license
- Outdoor seating
- Corner presence
- High traffic location
- Across from the High Line main entrance and Whitney Museum
- Move-in ready
- Café and other uses considered
- Full kitchen
- Finished lower level
- Separate meters

**NEIGHBORS**

- Apple
- Brunello Cucinelli
- Christian Louboutin
- Diane Von Furstenburg
- Gansevoort Hotel
- Google
- Hermes
- Intermix
- Match.com
- Patis
- Restoration Hardware & Hotel
- Rolex Boutique
- Samsung
- Soho House
- The Standard Hotel
- Tesla
- Theory
- Vince
- Warby Parker
- Whitney Museum
- Zadig & Voltaire