



PRIME MEATPACKING RETAIL AVAILABLE

807 Washington Street

between Horatio Street and Gansevoort Street

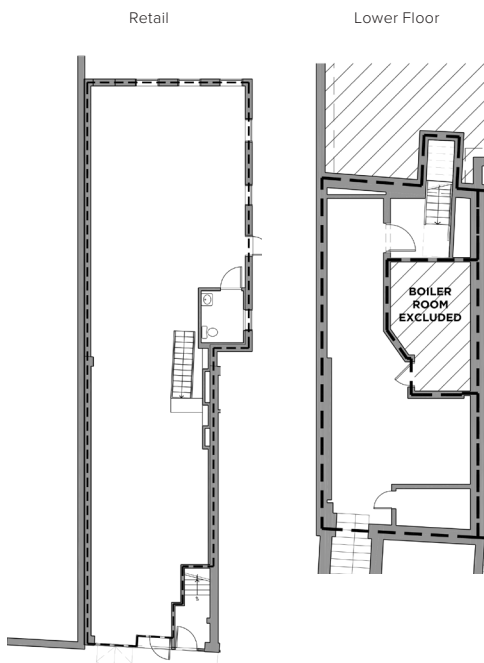
PREMISES

Ground Floor	1,562 sq ft
Lower Level	578 sq ft
Frontage	13 ft
Ceiling Height	10 ft
Availability	Immediate

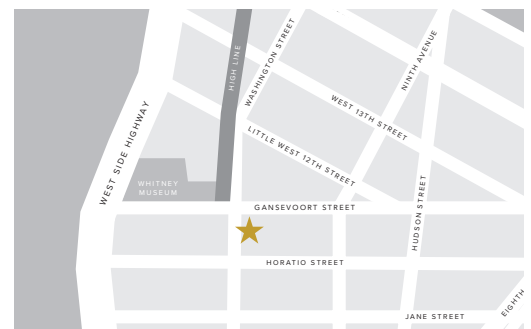
FEATURES

- Possible access to a rear garden
- High traffic location
- Across from the High Line main entrance and Whitney Museum
- Move-in ready
- Café and other uses considered
- Column free
- Finished lower level
- Large skylight
- Separate meters

FLOORPLANS



LOCATION



NEIGHBORS

- Apple
- Brunello Cucinelli
- Christian Louboutin
- Diane Von Furstenberg
- Gansevoort Hotel
- Google
- Hermes
- Intermix
- La Pecora Bianca
- Match.com
- Pastis
- Restoration Hardware & Hotel
- Rolex Boutique
- Samsung
- Soho House
- The Standard Hotel
- Tesla
- Theory
- Vince
- Warby Parker
- Whitney Museum
- Zadig & Voltaire

833 Washington Street, 2nd Floor
 New York, NY 10014
 212-924-2973
 info@romanoffequities.com
 romanoffequities.com

Darryl Romanoff
 212-323-7740
 darryl@romanoffequities.com

Stuart Romanoff
 212-323-7750
 stuart@romanoffequities.com