



PRIME MEATPACKING RETAIL AVAILABLE

803 Washington Street

between Horatio Street and Gansevoort Street

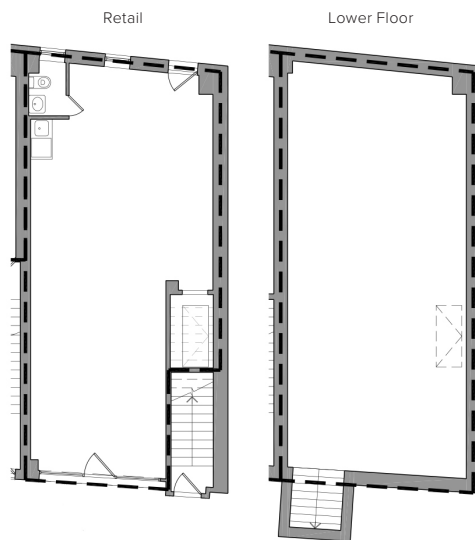
PREMISES

Ground Floor	725 sq ft
Lower Level	774 sq ft
Frontage	13 ft
Ceiling Height	10 ft
Availability	Immediate

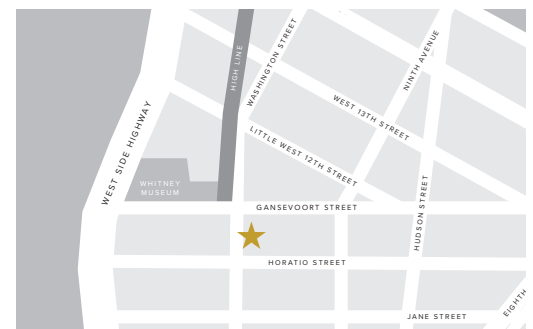
FEATURES

- High traffic location
- Across from the High Line main entrance and Whitney Museum
- Possible access to a rear garden
- Move-in ready
- Café and other uses considered
- Column free
- Finished lower level
- Separate meters

FLOORPLANS



LOCATION



NEIGHBORS

- Apple
- Brunello Cucinelli
- Christian Louboutin
- Diane Von Furstenburg
- Gansevoort Hotel
- Google
- Hermes
- Intermix
- La Pecora Bianca
- Match.com
- Pastis
- Restoration Hardware & Hotel
- Rolex Boutique
- Samsung
- Soho House
- The Standard Hotel
- Tesla
- Theory
- Vince
- Warby Parker
- Whitney Museum
- Zadig & Voltaire

ROMANOFF EQUITIES INC.

833 Washington Street, 2nd Floor
 New York, NY 10014
 212-924-2973
 info@romanoffequities.com
 romanoffequities.com

Darryl Romanoff
 212-323-7740
 darryl@romanoffequities.com

Stuart Romanoff
 212-323-7750
 stuart@romanoffequities.com